

# Empire State Building

**Empire State Building** is one of the tourist attractions in New York. It is a skyscraper located in **Manhattan** which offers a stunning view of the city.

## HISTORY

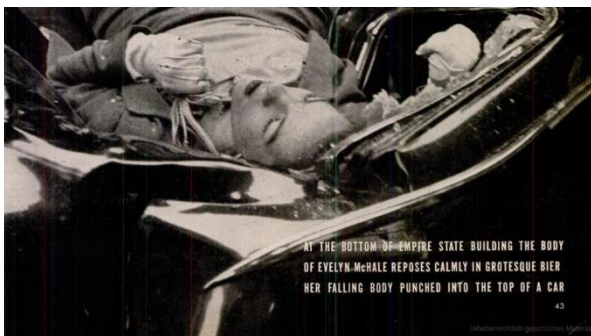
The building was designed in the Art Deco style by a company called Shreve, Lamb and Harmon. It took only **13 months** to build it which was extremely fast at that time. The construction was completed in 1931, and from 1931 to 1970 it was the **tallest building** in the world.

## ABOUT THE BUILDING

The building looks like a tall tower and is over **400 metres** tall to the top of its spire. It has **102 floors** and **73 fast lifts** inside. There are observation decks (viewing areas) on the 80<sup>th</sup>, 86<sup>th</sup> and 102<sup>nd</sup> floors which offer an amazing view of New York at day and night.

## DEATHS

In the history of Empire State Building over 30 people jumped off the building to commit suicide.



In 1947 Evelyn McHale jumped from the 86<sup>th</sup> floor and her body landed on the car below. She was wearing gloves and pearls, and her dead body looked perfect. Soon after she had landed atop a limousine, a student took a photo of her which became very famous and was published in *Time* magazine.

In December 1979, a 29-year-old woman, Elvita Adams who had lost her job, wanted to kill herself. She jumped from the tower but a strong wind pushed her body back and she landed on the floor below. A security guard saved her life.

## IMPORTANT INFORMATION

Empire State Building is open to tourist day and night. It offers a breath-taking view of the Big Apple especially at night. Every year 4 million tourist visit the building. After the collapse of the World Trade Center towers on 11<sup>th</sup> September 2001, Empire State Building is again the tallest building in New York.

